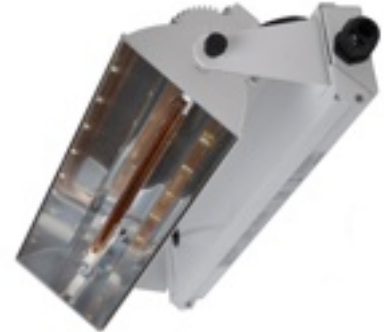


EHS Luna

Infrared Optical Range



- High frequency infrared heaters
- Instant controllable heat (1 second) from switch on
- Simple, energy efficient and flexible
- Economical to run (no pre-heat required)
- High Quality British Manufactured Product
- Con-focal extruded reflector gives best focused heating performance
- Boxes can be painted to any RAL colour if required (P.O.A)
- Manufactured using Mild Steel
- Perfect heating solutions from warehouses to Churches
- Expected lamp life of 5000 hours
- Virtually no maintenance
- Completely silent in operation
- Dry heat - does not heat the air or cause condensation
- Lower installation costs
- Sunshine Quality Heat without the UV
- Minimum mounting 1.8 meters
- Mounting height 2m to 6m (depending on model)
- Environmentally friendly
- Optional wire guards
- CE Approved
- 5 year guarantee
- 94% efficient at converting electricity into energy



Model	Rating	Voltage	Depth	Height	Length	Weight
EHS 90 115	1.5 kW	230-240V	148 mm	110 mm	430 mm	3.5kg
EHS 90 120	2 kW	230-240V	148 mm	110 mm	430 mm	3.5kg
EHS 90 130	3 kW	230-240V	155 mm	220 mm	430 mm	4kg
EHS 90 140	4 kW	230-240V	155 mm	220 mm	430 mm	4kg
EHS 90 230	3 kW	230-240V	148 mm	110 mm	820 mm	5kg
EHS 90 240	4 kW	230-240V	148 mm	110 mm	820 mm	5kg

Warning

All models conform to relevant safety standards but, during use, the reflector and lamps get VERY HOT and must not be touched when on. A suitable guard is therefore recommended and available if the heater is mounted below 3m